

THE ROYAL
SOCIETY
OF EDINBURGH

Friends of the Society

Corporate Partners of The
Royal Society of Edinburgh





The Initiative

The Royal Society of Edinburgh (RSE) is inviting a number of chosen organisations to become **Friends of the Society**.

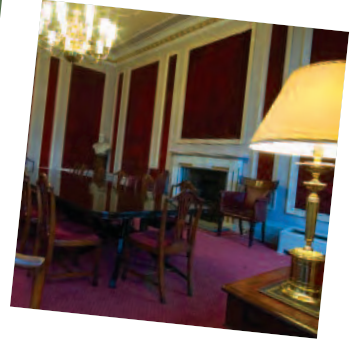
This brand new initiative has been created with the aim of bringing business and academia closer together and will offer the Friends a wide range of partner benefits in return for a modest annual fee.



THE ROYAL
SOCIETY
OF EDINBURGH

Why accept?

By accepting our invitation, your organisation and the other Friends will be helping the RSE to perform its important beneficial activities for the good of Scotland now, and in the future. At the same time, as a chosen Friend you will be associating yourself with the RSE, its history and high standing in the community and the work it carries out.



What do the partners get?

Organisations who take up the invitation will receive a number of benefits:

- Free hire of one of the RSE's prestigious private dining rooms for a lunch or evening event on a single date per year.
(date subject to availability)





- A 20% reduction on the published rates for the hire of all RSE function rooms on any other dates.

(dates subject to availability)



- Free entrance to RSE lectures, forums, conferences and exhibitions for individuals within Friends of the Society organisations.

(number restrictions will apply for certain events)



- Free access to an annual Friends of the Society evening event where two representatives from each partner organisation can eat, meet and network with others.

(below are example photographs of previous RSE partner events held at the National Museum of Scotland and Edinburgh Castle)



- Free, and where possible, early access to RSE publications including Science Scotland and RSE Inquiry Reports.
- Free corporate branding as a Friend of the Society in the RSE newsletter ReSource, in the RSE Annual Report, in the RSE Directory and on a dedicated page on the RSE website.





THE ROYAL
SOCIETY
OF EDINBURGH

How much does it cost?

The annual fee is £2,500, however it would be advantageous for both parties to commit to a longer period and with that in mind, there will be incentives for those who wish to do so.

One year fee **£2,500**

Two year fee **£4,500** (£2,250 annually)

Three year fee **£6,000** (£2,000 annually)

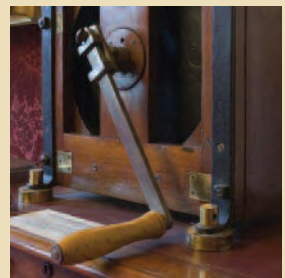
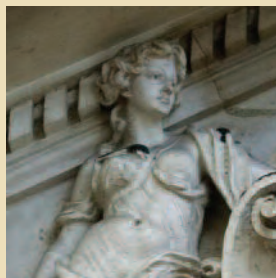
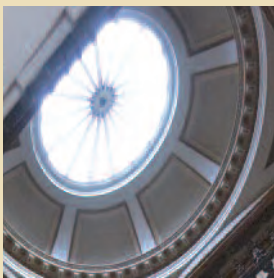
What are the timescales?

The Friends of the Society
year will run from April
through to March.



Where can I find out more?

To find out more about The Royal Society of Edinburgh's Friends of the Society initiative or to accept our invitation contact Gordon Adam, Director of Business Development on **0131 240 2781** or email **gadam@royalsoced.org.uk**



THE ROYAL
SOCIETY
OF EDINBURGH

The Royal Society of Edinburgh
22 – 26 George Street, Edinburgh EH2 2PQ

T 0131 240 5000

F 0131 240 5024

E info@royalsoced.org.uk

W www.royalsoced.org.uk



Scottish Charity No. SC000470

ISSN 1742-1810